

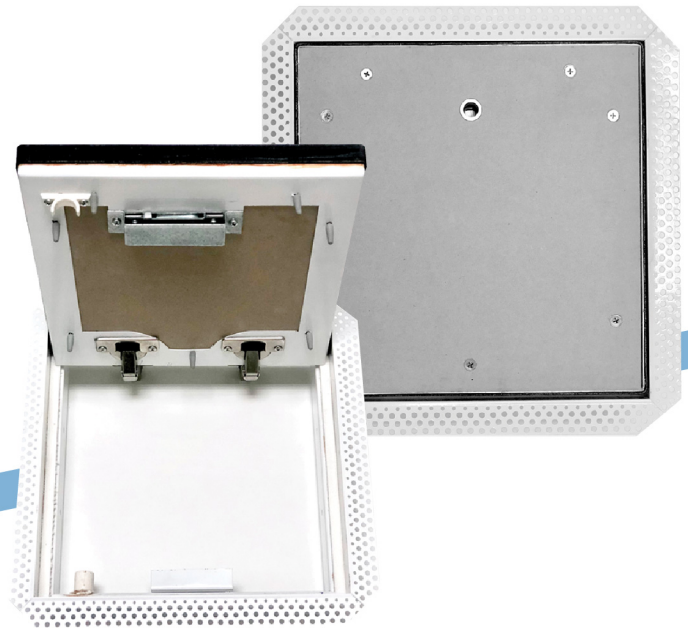
PROLOCK

FIRE RATED ACCESS PANELS

The PROLOCK fire rated access panels are designed and tested to meet performance requirements in accordance to British Standards BS 476 Part 22. The door panel is constructed from high performance materials with strong insulation properties against temperature and integrity.

The PROLOCK fire rated access panels has fire performance rating of 1 hour (60/60/60) and is designed to fit fire rated ceilings/partitions and openings in concrete structures. Customer have the choice of selecting panels with either set bead surround frame or feathered edge frame depending on requirements.

The PROLOCK fire rated access panels has a hinged door fixed with heavy duty concealed hinges and secured with budget lock with a square bar key.



APPLICATIONS

PROLOCK fire rated access panels can installed to wall or ceiling. Reinforcement of ceiling frame may be required depending on size of access panel and design of ceiling frame. The access panel is best supported independent of ceiling frame.

PRODUCT SIZES

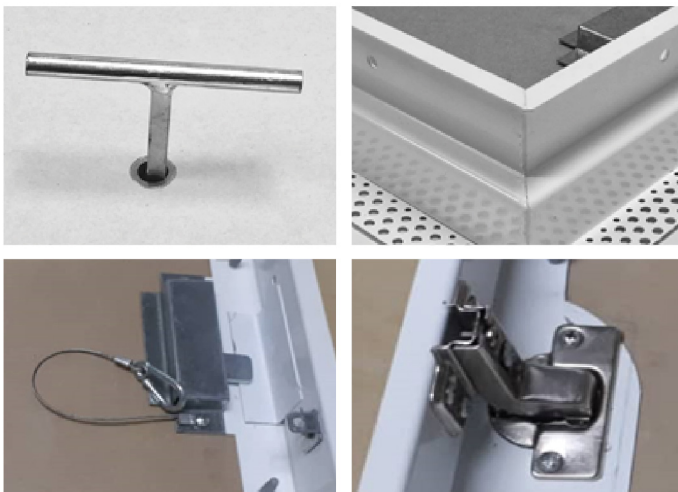
PROLOCK fire rated access panels is available in standard sizes. Panels of non-standard sizes can be custom made to order.

FEATURES

- Strong and robust design
- Heavy duty steel frame
- Low profile door panel
- Easy opening with T-bar key
- Door with safety wire rope
- Certified by TÜV SÜD

STANDARD PRODUCTS

Product Code	Description
FAP60 - 3030S	300x300 mm 1 Hour Fire Rated Access Panel Set Bead Surround
FAP60 - 4545S	450x450 mm 1 Hour Fire Rated Access Panel Set Bead Surround
FAP60 - 6060S	600x600 mm 1 Hour Fire Rated Access Panel Set Bead Surround
FAP60 - 3030F	300x300 mm 1 Hour Fire Rated Access Panel Feathered Edge
FAP60 - 4545F	450x450 mm 1 Hour Fire Rated Access Panel Feathered Edge
FAP60 - 6060F	600x600 mm 1 Hour Fire Rated Access Panel Feathered Edge



PROLOCK

FIRE RATED ACCESS PANELS

INSTALLATION GUIDE

FIXING TO DRY WALL

1. Mark position of access panel on the wall to suit size of access panel and then cut out the wall board (opening size : access panel size + 6 mm). Then, cut out the board using a drywall saw.
2. Place a piece of wall stud (set in 16 mm from edge of opening) as trimmers to all four sides of opening as shown and fasten strip of 16 mm thick fire rated plasterboard to web of stud all round in line with edge of opening. Strengthen existing ceiling frame if necessary.
3. Place access panel into opening. Ensure access panel is placed square to opening.
4. Unlock and open door of access panel to fasten screws through fixing holes provided on the outer frame of access panel. Screws (min. 2 screws per side) are fastened through plasterboard strip into stud trims on all four sides.
5. Seal joints between access panel frame and fire rated plasterboard all round with approved fire sealant.

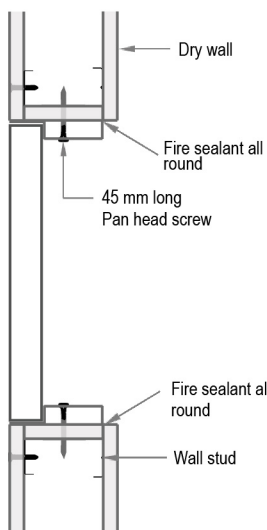


Fig. 1 - Installation of Hatch to Dry Wall

FIXING TO MASONRY/CONCRETE WALL

1. Mark the position of access panel on wall to suit size of access panel (opening size : panel size + 6 mm). Then, cut outline of opening and then wall to form opening.
2. Clean away debris on opening and place the access panel into opening.
3. Ensure the access panel is placed square and then mark position of anchors on wall with the hatch opened.
4. Remove access panel and drill holes into wall as marked to install anchors (use min. M8x80). Fit access panel back into opening and install masonry anchors in accordance to manufacturer's instructions.
5. Seal joints between access panel frame and fire rated plasterboard all round with approved fire sealant.

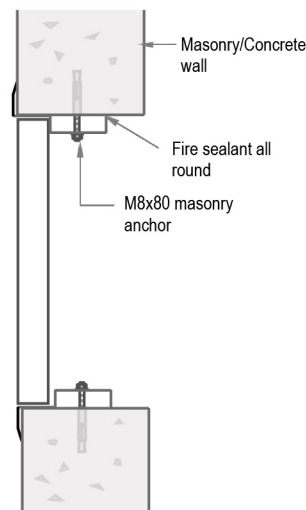


Fig. 2 - Installation of Hatch to masonry / concrete wall

Note : PROLOCK access panels are supplied packed in paper box. Care must be taken to ensure that sensitive parts of the access panel such as intumescent seal on the door is not damaged to maintain the performance of the product.

FIXING TO CEILING

1. Mark the position of access panel on ceiling lining to suit size of access panel (opening size shall be panel size + 6 mm). Then, cut out the board using a drywall saw.
2. Place a piece of wall stud as trimmer to all four sides of opening as shown and fasten strip of 16 mm thick fire rated plasterboard to web of stud all round in line with edge of opening. Strengthen existing ceiling frame if necessary.
3. Fit access panel into opening from below. Ensure access panel is placed square to opening. Unlock and open hatch to fasten screws through fixing holes provided on the outer frame of access panel. Screws (min. 2 screws per side) are fastened through plasterboard strip into stud trims on all four sides. Do not over drive the screws or it may cause the frame of the access panel to distort.
4. Seal joints between access panel frame and fire rated plasterboard all round with approved fire sealant.

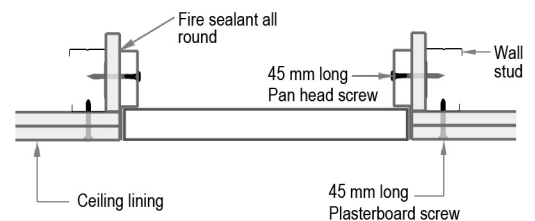


Fig. 3 - Installation of Ceiling Hatch



Saint-Gobain Malaysia Sdn. Bhd.
(636775-T)

No.1, Jalan Sultan Mohamad 4
Kawasan Perindustrian Bandar
Sultan Suleiman, Port Klang
42000 Selangor MALAYSIA

Tel : + 603 3169 5588
Fax: + 603 3169 5688

Email : solutions.my@saint-gobain.com

www.gyproc.my

SINGAPORE OFFICE
Emix Industry (S) Pte. Ltd.
2 Venture Drive, #09-10/11/12/13/14
Vision Exchange
SINGAPORE 608526
Tel: + 65 6330 8266
www.gyproc.sg



www.facebook.com/GyprocMalaysia
www.facebook.com/GyprocSingapore